

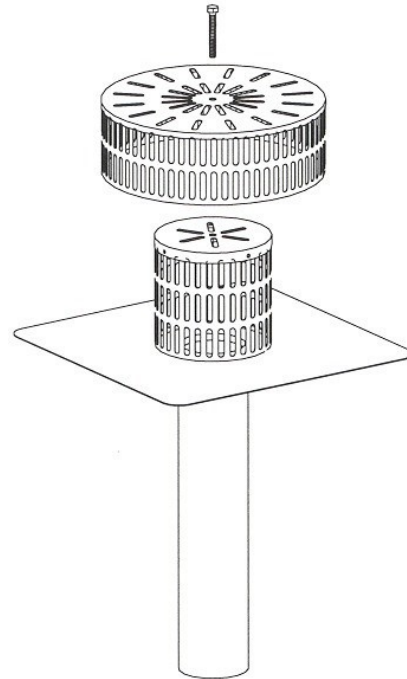
ULTRA INVERTED COPPER DRAIN

DESCRIPTION

The *Ultra Inverted* copper roof drain assembly is made of a *Murphco Ultra** drain as basic element, capped with copper dome strainer riveted to 4 cleats fixed permanently to the flange with bronze solder points (MIG process.)

The first dome strainer is equipped with a cap that protects the drainage system against vandalism and enables the necessary access for maintenance.

Specially designed for inverted roof systems (protected membrane), the first dome strainer is covered of a stone-guard (second dome strainer) retained by a bolt permitting its adjustment to the insulation thickness and to hold it tight onto the insulation surface (see installation, page 2)



The *Ultra Inverted* copper roof drain is distinctive by its unique and complete anti-vandalism design, the whole exclusively made of copper.

Use: recommended for all types of flat roofs: industrial, commercial and institutional.

CHARACTERISTICS

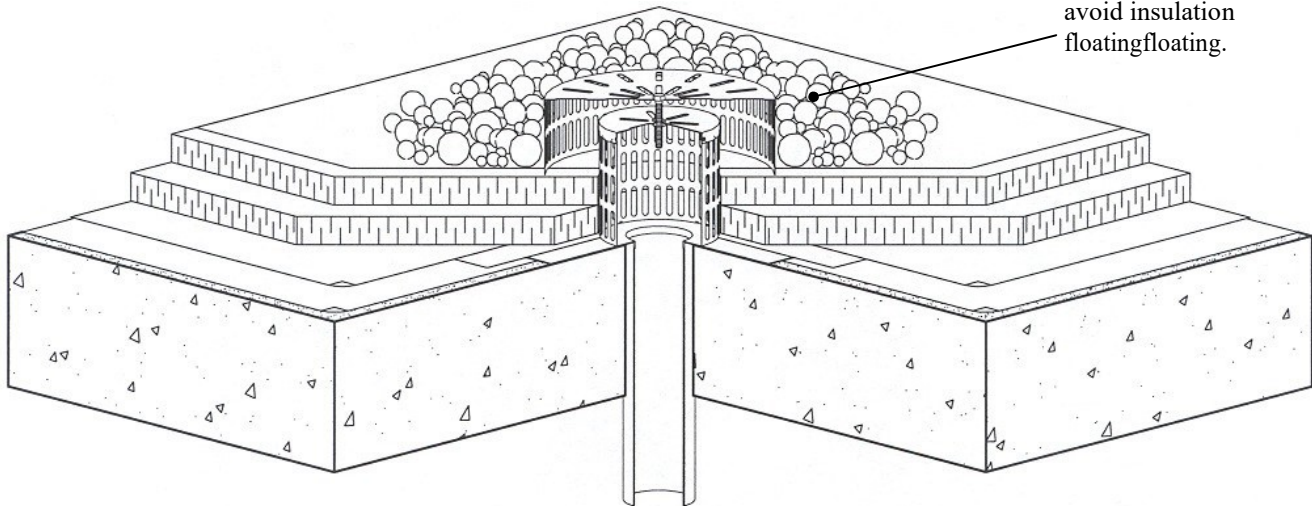
- Unique design for inverted roof system;
- Adjustable stone-guard and bolted to the base dome strainer;
- Dome strainer fixed permanently to the flange of the drain, without perforation;
- Dome strainer and cap screwed in place and removable when necessary;
- Anti-vandalism type assembly;
- All the materials are made of copper, insuring a remarkable life expectancy;
- No mechanical anchor that could perforate the membrane and the flange.

ULTRA INVERTED COPPER DRAIN

INSTALLATION

This type of drain is specially and exclusively designed for flat inverted roof system (protected membrane) and it is compatible with all types of membranes.

Note: Sufficient ballast quantity to avoid insulation floating.



For the membrane installation method and also for the connection into the interior rainwater leader, please refer to the technical data sheets of *Murphco Ultra** copper roof drain.

FEATURES

- Exclusively for inverted roof system (protected membrane);
- Adjustable stone-guard retained by a bronze bolt;
- Complete anti-vandalism system;
- Permanent dome strainer with removable cap;
- Variable dome strainer height according to insulation thickness
- Rigid copper sleeve, without joint, clip and vertical solder;
- 32 oz copper flange folded down into the sleeve with patented *Murphco* punch;
- *MIG* solder;
- Compatible with U-flow™ seal, or clamp collar and flexible coupling sleeve for a maximum flow;
- Durability, quality and industrial grade.

WARRANTY

- Life time warranty against corrosion;
- Guaranteed against fabrication defects

ULTRA INVERTED COPPER DRAIN

MATERIALS

- Drain, flange and sleeve: see technical data sheets of *Murphco Ultra** copper roof drain with interior diameters of 2", 2½", 3", 3½", 4", 4½", 5", 5½" et 6" (51, 67, 76, 92, 102, 117, 127 et 143 mm).
- Dome strainer: vertical wall: 32 oz copper (0.042", 1.066 mm), with 3 rows of 31 standard orifices each. (variable height on request)
 - cap : 32 oz copper (0.042", 1.066 mm).
- Stone-guard: - vertical wall: 32 oz copper (0.042", 1.066 mm), with 2 rows of 64 standard orifices each.
 - cap : 32 oz copper (0.042", 1.066 mm).
- Solder: *MIG* solder process
- Screws and rivets: full copper
- Bolt and nut: full bronze.

Standard dimensions				
Piece	Dome strainer		Stone-guard	
Height	6" ¹	150 mm ¹	4"	100 mm
Diameter	6¼"	160 mm	12"	300 mm
Standard orifice	0,42 in ²	268,3 mm ²	0,42 in ²	268,3 mm ²
Total vertical opening	39,06 in ²	24949,1 mm ²	53,76 in ²	34338,5 mm ²

¹ : variable height according to insulation thickness (on request)

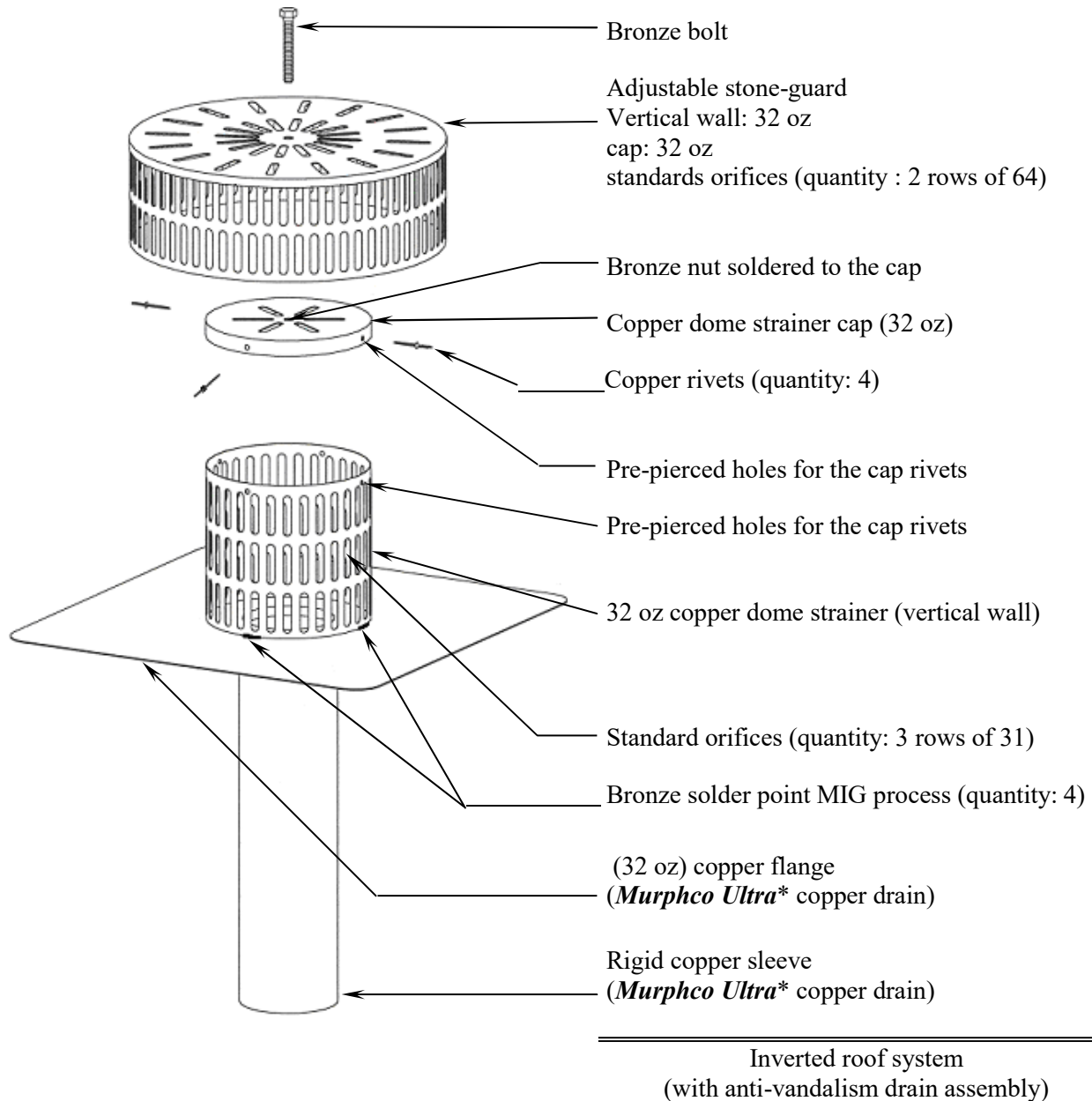
CONTROL-FLOW OPTION

When the drainage system is restricted and to avoid overloading the interior rainwater leader, a copper control-flow cylinder can be installed in the dome strainer.

Application field: The plumbing installation should be made in conformity with the appropriate provincial, territorial or municipal rules or, in absence of such regulation, with the current Canadian Plumbing Code.

ULTRA INVERTED COPPER DRAIN

ASSEMBLY



USUALLY SUPPLIED

When you buy an *Ultra Inverted* copper drain, you get:

- 1 *Murphco Ultra** copper drain with dome strainer already fastened to the flange;
- 1 copper dome strainer cap with soldered bronze nut and bronze bolt;
- 4 copper rivets;
- 1 copper stone-guard.

ULTRA INVERTED COPPER DRAIN

DRAIN SECTION

Scale : 1 :5

Dome strainer cap

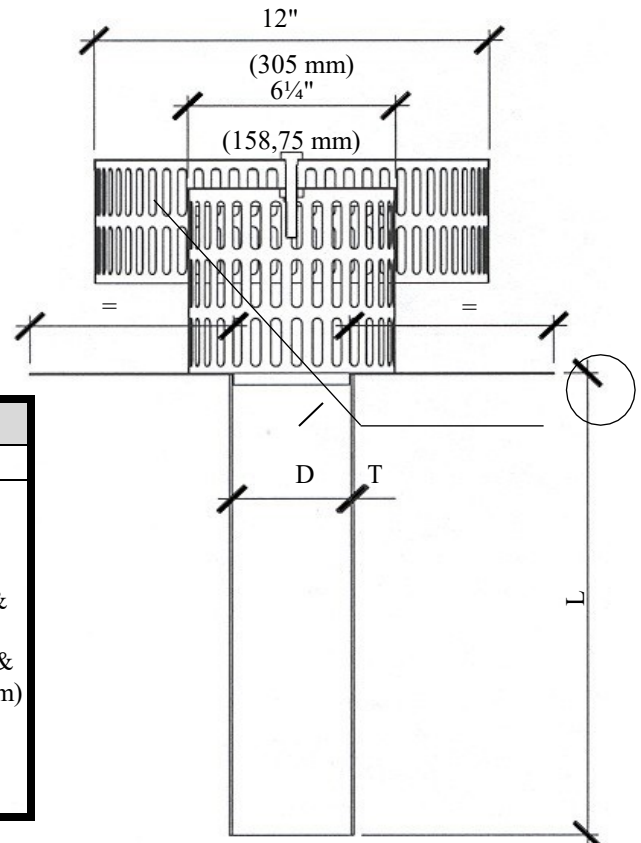
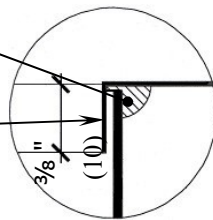
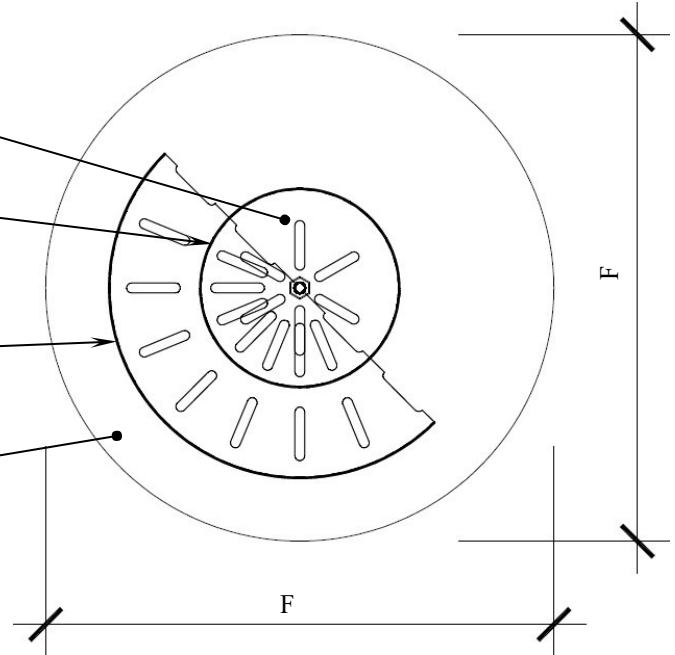
Dome strainer (vertical wall)

Adjustable stone-guard

32 oz copper flange
(Murphco Ultra copper drain)*

Continuous solder MIG

Copper flange folded down in the drain sleeve



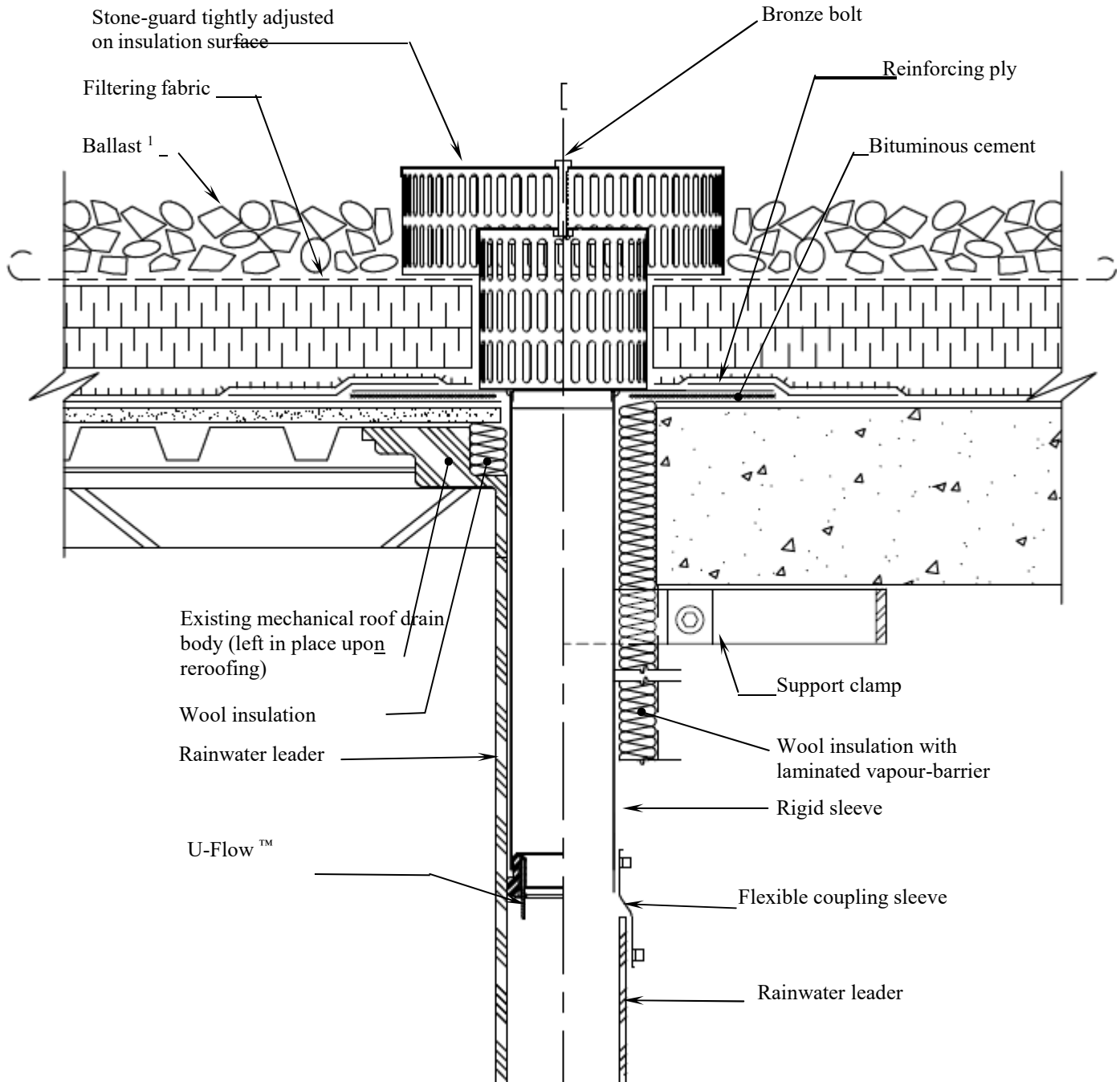
ASSEMBLY

Scale : 1 :1

Standards dimensions			
D(interior)	T	F	L
2 " (51 mm)	0,050" (1,27 mm)	Round 16" (400 mm)	12" & 18" (300 & 450 mm)
2 5/8 " (67 mm)	0,050" (1,27 mm)		
3 " (76 mm)	0,072" (1,83 mm)		
3 5/8 " (92 mm)	0,072" (1,83 mm)		
4" (102 mm)	0,090" (2,29 mm)		
4 5/8 " (117 mm)	0,090" (2,29 mm)		
5" (127 mm)	0,090" (2,29 mm)		
5 5/8 " (1143 mm)	0,090" (2,29 mm)		
6 " (152 mm)	0,090" (2,29 mm)		

ULTRA INVERTED COPPER DRAIN

TYPICAL DETAIL



¹ Sufficient ballast quantity to avoid insulation floating around drain.

Notice to plumbing / roofing contractor: When a copper drain sleeve must be cut for adjustment to appropriate length, avoid the use of vibrating tools that could generate fissures in the copper flange or sleeve along the solder. Rather utilize a circular cutter.

Les Produits MURPHCO Ltée

TECHNICAL DATA

ULTRA INVERTED COPPER DRAIN

DESIGNED AND MANUFACTURED BY LES PRODUITS MURPHCO LTÉE

Technical assistance or further information may be obtained from:



Manufacturier et spécialiste de drains de toiture

Boutique de Métal en feuille

4955, rue Brock Montréal, Qc, H4E 1B5

Tél : (514) 937-3275 Fax : (514) 937-6797

Site web : www.produitsmurphco.com Courriel : info@produitsmurphco.com

DOCUMENTATION PREPARED WITH THE TECHNICAL COOPERATION OF:

Englobe

1200, boul. Saint-Martin Ouest, bureau 400

Laval (Québec) H7S 2E4

T 514.281.5173

F 450.668.5532

info@englobecorp.com

NOTICE

The information and specification provided in this document are applicable at time of publication. They are condensed from the exact results obtained through real tests and field experience, but may not be construed as implying any absolute and final dictate on our part. **Les Produits MURPHCO Ltée** Reserves the right to modify, without notice, the information provided in the present document, as a result of its research and development policy on its products.

* Mark of Les Produits Murphco Ltée, see appropriate technical date sheet