

ULTRA COPPER SCUPPER DRAIN

DESCRIPTION

The *Murphco Ultra* copper scupper roof drain is an assembly made of rigid copper sleeve soldered to a 32 oz (1.006 mm) copper flange without joint, clip or vertical solder.

The design of the joint between the flange and the sleeve makes it a very distinctive roof drain. The flange is folded down in the sleeve with the patented *Murphco* punch. Both copper pieces are then unified with a continuous MIG circular bronze solder joint, under the flange. This solder joint cannot be melted when it is heated by a blowtorch at the time of application of modified bitumen membranes so that the assembly remains permanently watertight.

Furthermore, this method avoids any exposition or contact of the water on the soldered joint, preventing any infiltration risk on account of solder defect.

The scupper drain is equipped with a copper dome strainer fixed permanently to the flange with bronze solder points (*MIG* process).

The dome strainer is equipped with a cap that protects the drainage system against vandalism and enables the necessary access for maintenance.

The *Murphco Ultra* copper scupper roof drain is distinctive by its unique and complete anti-vandalism design, the whole exclusively made of copper.

Use: recommended for all types of flat roofs: industrial, commercial and institutional.

MATERIALS

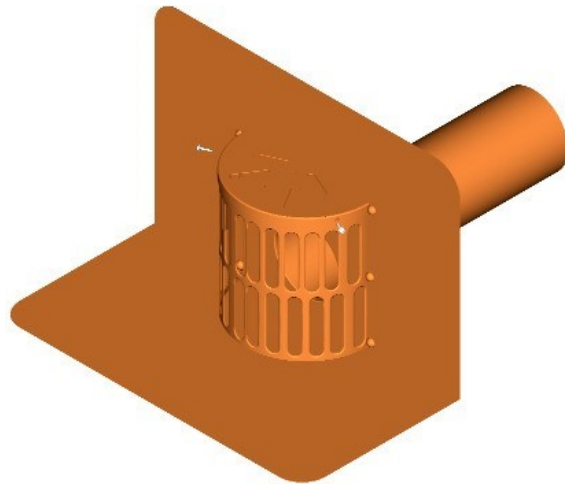
Flange: 32 oz. copper, thickness (1.066 mm)

Sleeve: Rigid copper pipe 0.050"(1.27 mm) thick for standard drain of 4"(100 mm) interior diameter

Standard: The rigid sleeve is certified ASTM B75

Grade: industrial, DHP C12200

* Mark of Les Produits Murphco Ltée, see appropriate data sheet



ULTRA COPPER SCUPPER DRAIN

Dome strainer: vertical wall: 32 oz copper (1.066 mm, 0.042"), with 2 rows of 12 standards orifices.

cap : 32 oz copper (1.066 mm, 0.042"), with 5 orifices

Solder : *MIG* process solder

Screws : stainless steel

DIMENSIONS

Flange: 16" x 16" (400 x 400 mm)

Sleeve: Standard length 12" (300 mm), longer sleeves available on request.

Dome strainer

Height : 6 1/2" (165 mm)

Diameter : 7 " (180 mm)

Standard orifice: 1.48 in² (956 mm²)

INSTALLATION

At the membrane level:

This type of roof scupper drain is used on flat roofs covered with B.U.R. asphalt felt membranes, modified bitumen or E.P.D.M. roofing and waterproofing membranes.

To seal the scupper drain to the membrane, it is recommended to prime the copper flange on both faces with a compatible primer. Then, the flange is applied into a continuous layer of compatible and heavy duty bituminous cement, or specified adhesive.

To complete the flashing of the flange to an asphalt felt membrane, apply 2 plies of heavy duty cotton fabric and a top ply no.15 asphalt felt, each one applied into hot bitumen.

For a modified bitumen, apply a reinforcing ply and extend the cap sheet membrane in accordance with the recommendation of the membrane manufacturer.

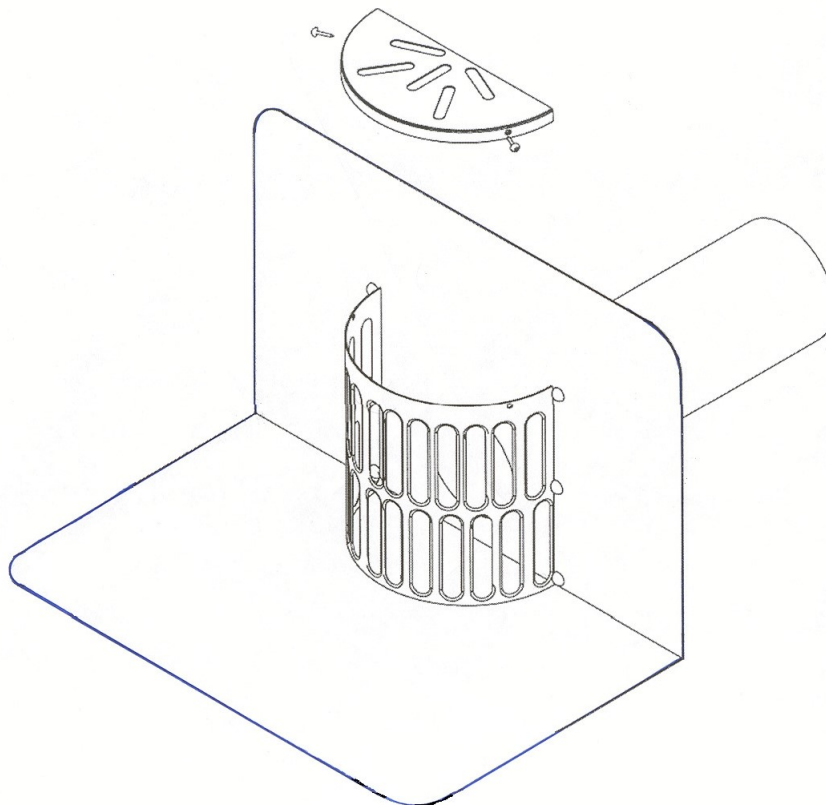
For an E.P.D.M. membrane, strictly follow the installation procedures recommended by the membrane manufacturer.

ULTRA COPPER SCUPPER DRAIN

CHARACTERISTICS

- Unique and complete anti-vandalism design;
- Copper dome strainer fixed permanently to the flange of the scupper drain;
- Permanent dome strainer with removable cap;
- No mechanical anchor that could perforate the membrane and the flange;
- All the materials are made of copper and stainless steel insuring a remarkable life expectancy.

INSTALLATION

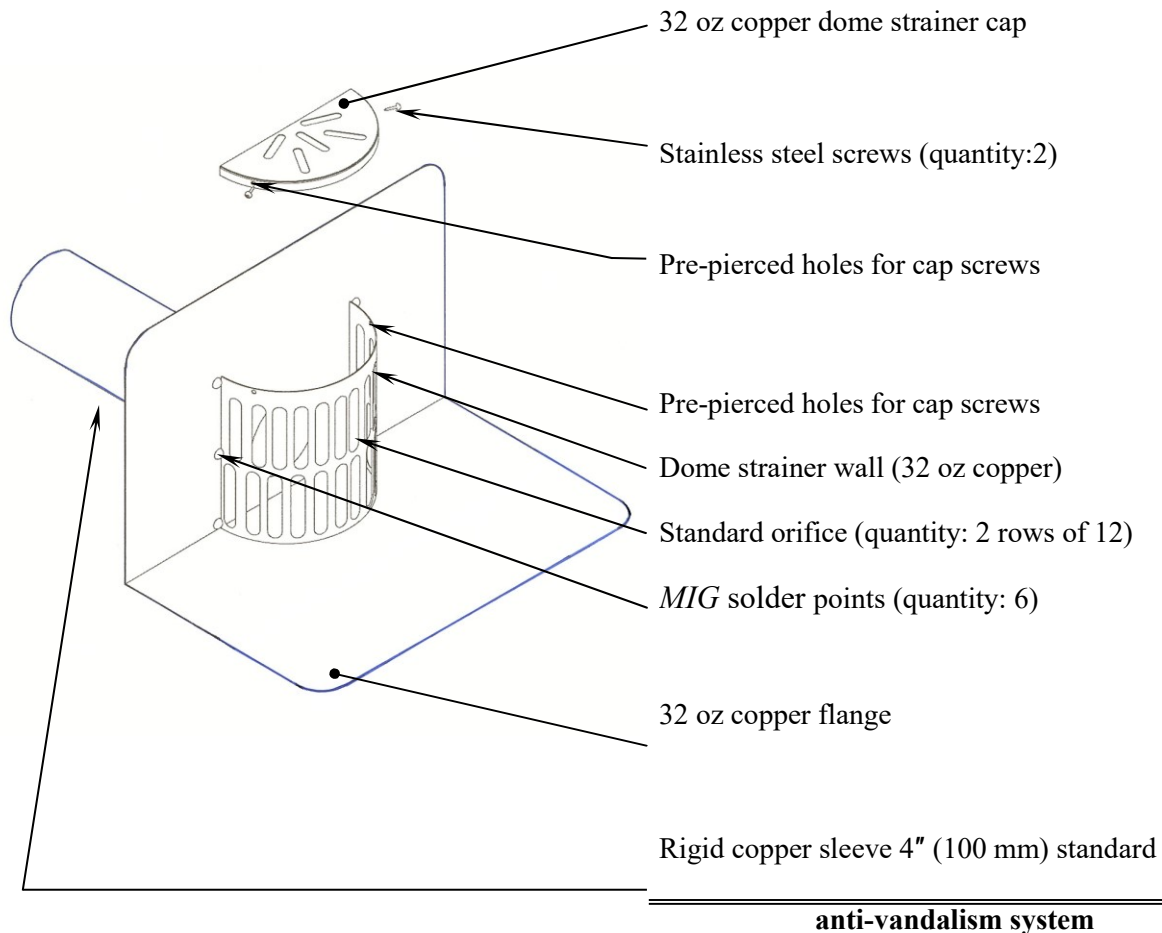


FEATURES AND WARRANTY

- Complete anti-vandalism system;
- Permanent dome strainer with removable cap;
- Rigid copper drain sleeve, without joint, clip and vertical solder;
- 32 oz copper flange folded down in the sleeve with the patented *Murphco* punch;
- MIG solder
- Durability, quality and industrial grade;
- Life time warranty against corrosion.

ULTRA COPPER SCUPPER DRAIN

ASSEMBLY



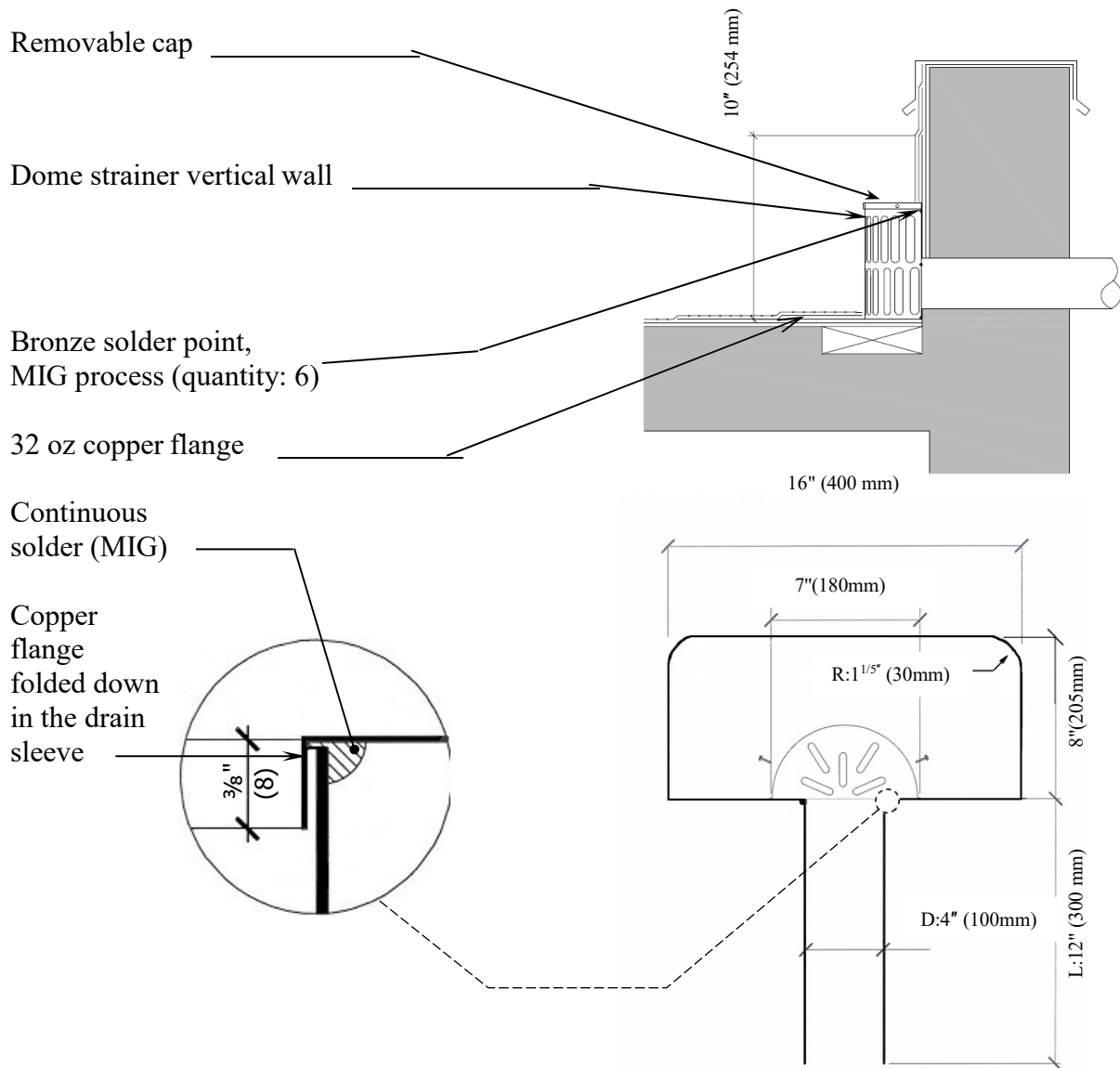
USUALLY SUPPLIED

When you buy an *Ultra copper scupper drain*, you get:

- 1 copper scupper, the vertical wall and the dome strainer fixed to the flange;
- 1 copper cap dome strainer;
- 2 stainless steel screws.

ULTRA COPPER SCUPPER DRAIN

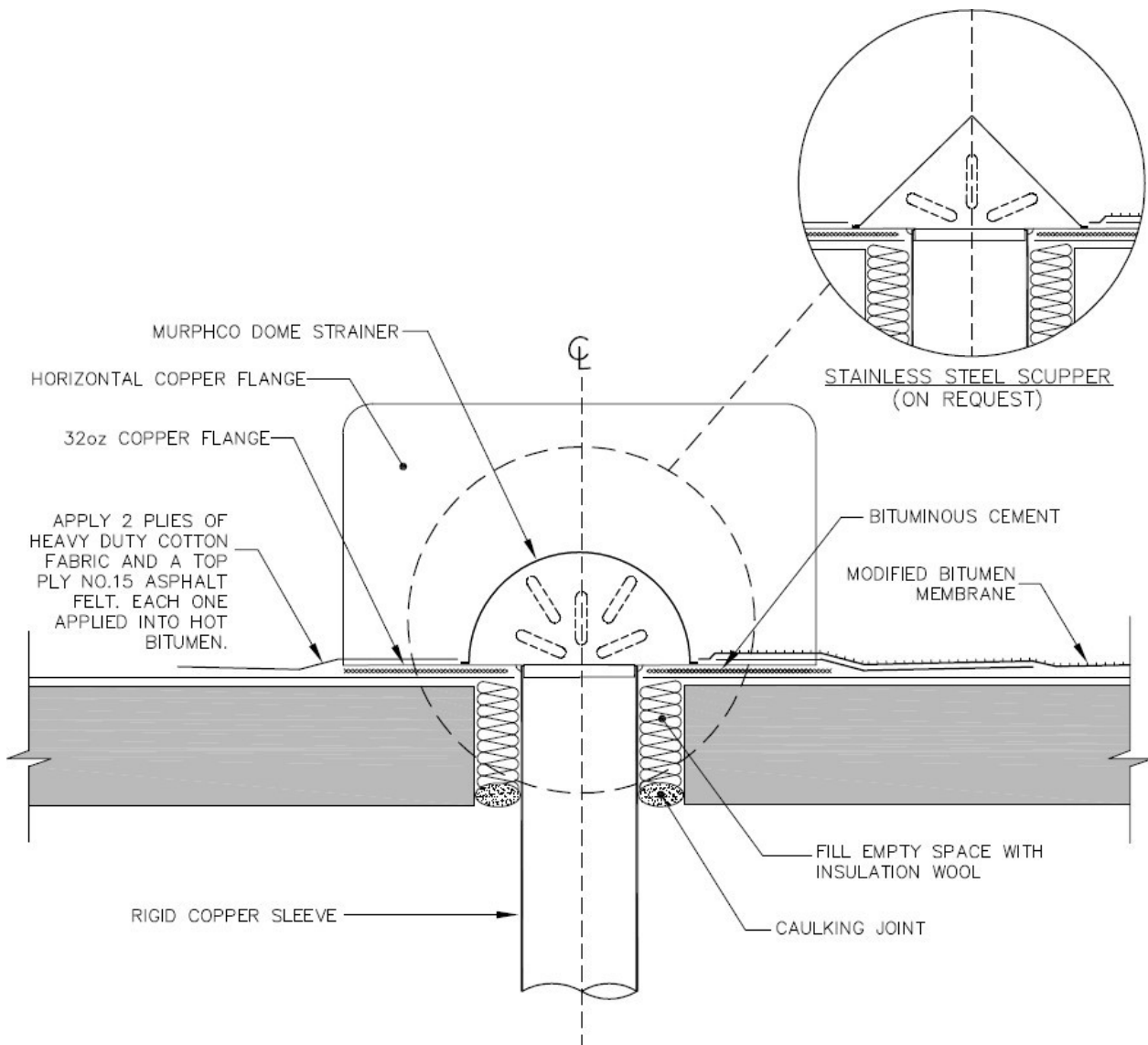
SCUPPER DRAIN SECTION



Notice to plumbing / roofing contractor: When a copper drain sleeve must be cut for adjustment to appropriate length, avoid the use of vibrating tools that could generate fissures in the copper flange or sleeve along the solder. Rather utilize a circular cutter.

ULTRA COPPER SCUPPER DRAIN

TYPICAL DETAIL



Application field:

The plumbing installation should be made in conformity with the appropriate provincial, territorial or municipal rules or, in absence of such regulation, with the current Canadian Plumbing Code.

ULTRA COPPER SCUPPER DRAIN

DESIGNED AND MANUFACTURED BY LES PRODUITS MURPHCO LTÉE

Technical assistance or further information may be obtained from:



Manufacturier et spécialiste de drains de toiture

Boutique de Métal en feuille

4955, rue Brock Montréal, Qc, H4E 1B5

Tél : (514) 937-3275 Fax : (514) 937-6797

Site web : www.produitsmurphco.com Courriel : info@produitsmurphco.com

DOCUMENTATION PREPARED WITH THE TECHNICAL COOPERATION OF:

Englobe

1200, boul. Saint-Martin Ouest, bureau 400

Laval (Québec) H7S 2E4

T 514.281.5173

F 450.668.5532

info@englobecorp.com

NOTICE

The information and specification provided in this document are applicable at time of publication. They are condensed from the exact results obtained through real tests and field experience but may not be construed as implying any absolute and final dictate on our part. **Les Produits MURPHCO Ltée** Reserves the right to modify, without notice, the information provided in the present document, as a result of its research and development policy on its products.