

DUO PROCAST DOME STRAINER

DESCRIPTION

Dual strainer for drain on flat roofs, made of shop fabricated cast aluminum, the Duo Procast Dome Strainer is compatible with the *Murphco Ultra Plus duo procast**, *Ultra Mek duo procast** and *Ultra duo procast** rigid copper roof drains.

NEW.....NEW.....Duo procast dome also available in stainless

Both strainers are formed from aluminum alloy melted at high temperature of more than 650° C (1200° F), poured by gravity in a "permanent" cast-iron mould, then cooled down and un moulded. This type of cast provides more resistant work, in general with 20% to 30% higher mechanical capacities than with ordinary moulds. Based on *Les Produits Murphco Ltée* specification the strainers are prepared and fabricated by a certified and experienced firm, specialized and renowned in this type of production.

Anti-vandalism protection (on certain models) and simplified opening for maintenance and cleaning. It is specifically designed to accommodate our flow-controlled cylinder and can be used in both conventional and inverted roof systems (see footnotes for compatible models)

TECHNICAL DESCRIPTION

Color : Aluminum (metallic grey)

Strainer : Cast aluminum alloy

Alloy : 356 or 413

Screws : Stainless steel
2 screws of 1/4" x 3/4"
(6mm x 19mm)



Duo Procast Dome Strainer

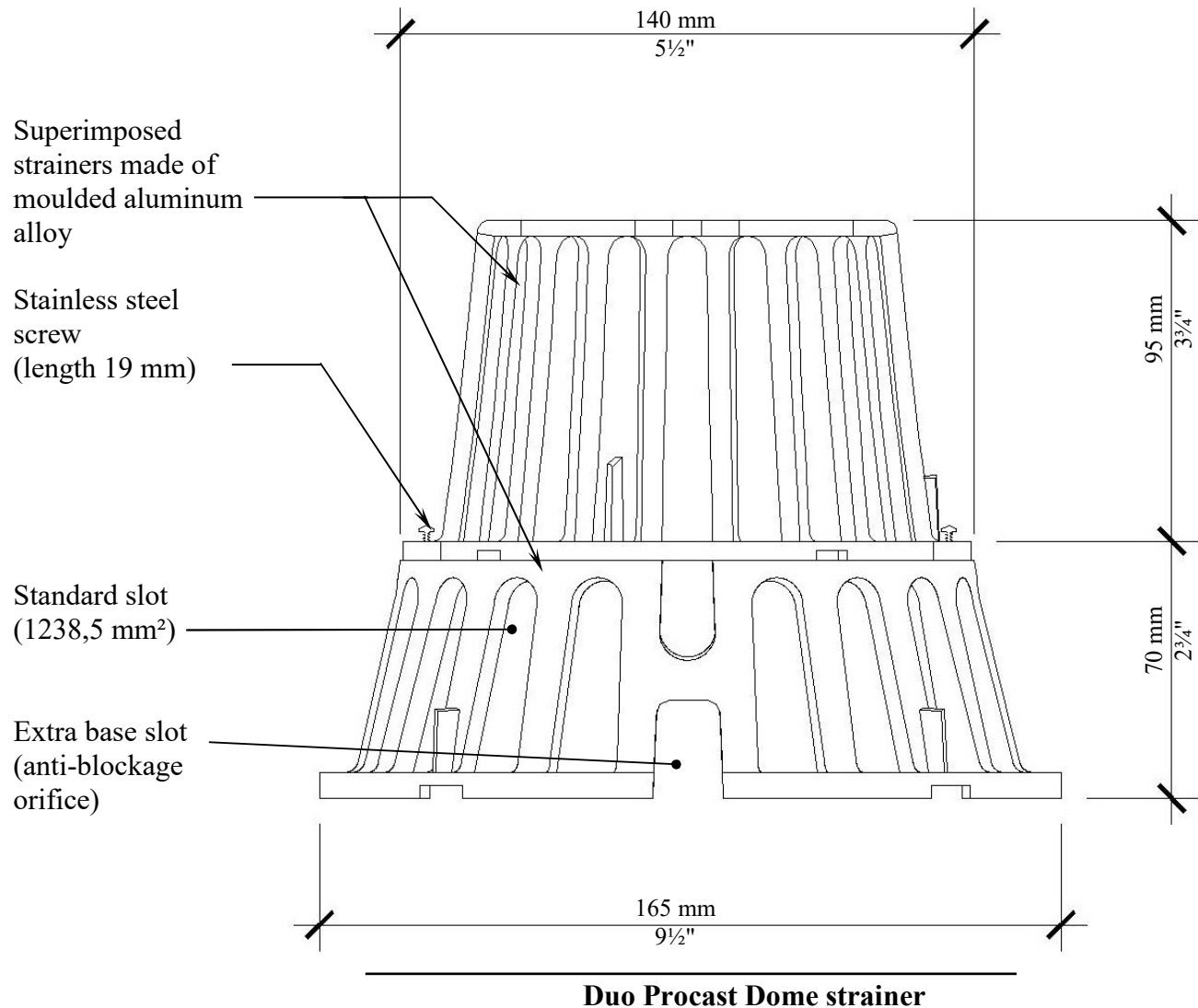
USUALLY SUPPLIED

The **Duo Procast** Dome Strainer can be installed on every existing or new drain with an interior diameter between 25 mm to 200mm (2" to 8").

When you buy **Duo Procast** double aluminum strainer, you get:

- 2 moulded aluminum strainers to be superimposed to one another;
- 2 screws of 19 mm (3/4")

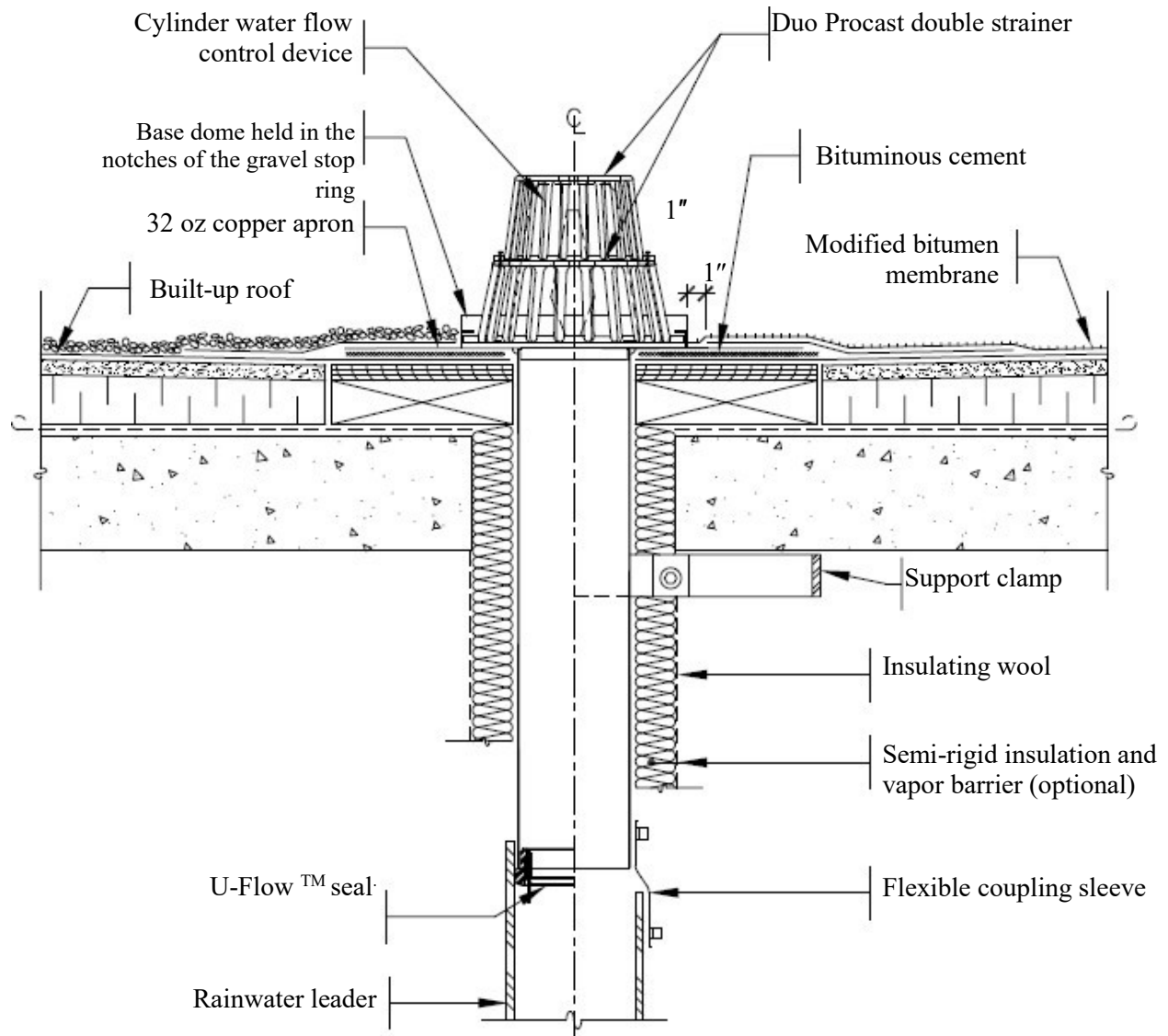
TECHNICAL DRAWING



Notice : At least twice a year, a thorough cleaning of the drain baskets should be done in order to favorize the free surface water evacuation and to avoid partial blockage. The presence of the anti-blockage orifice, even if favorizing a better drainage, does not exclude the required preventive cleaning.

DUO PROCAST DOME STRAINER WITH ULTRA PLUS* COPPER DRAIN

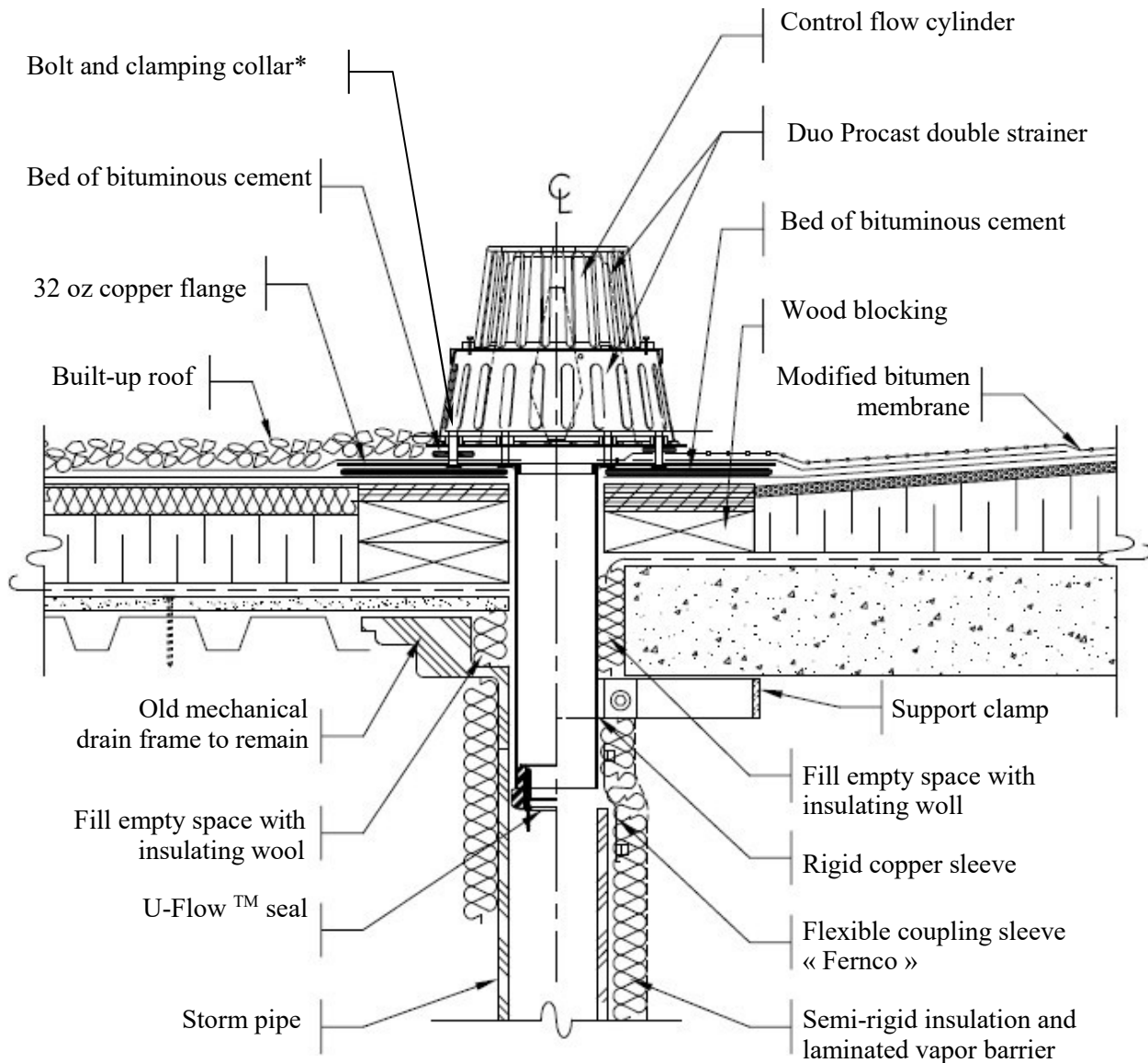
TYPICAL ASSEMBLY



Conventional roofing system, not anti-vandalism

DUO PROCAST DOME STRAINER WITH ULTRA MEK* COPPER DRAIN

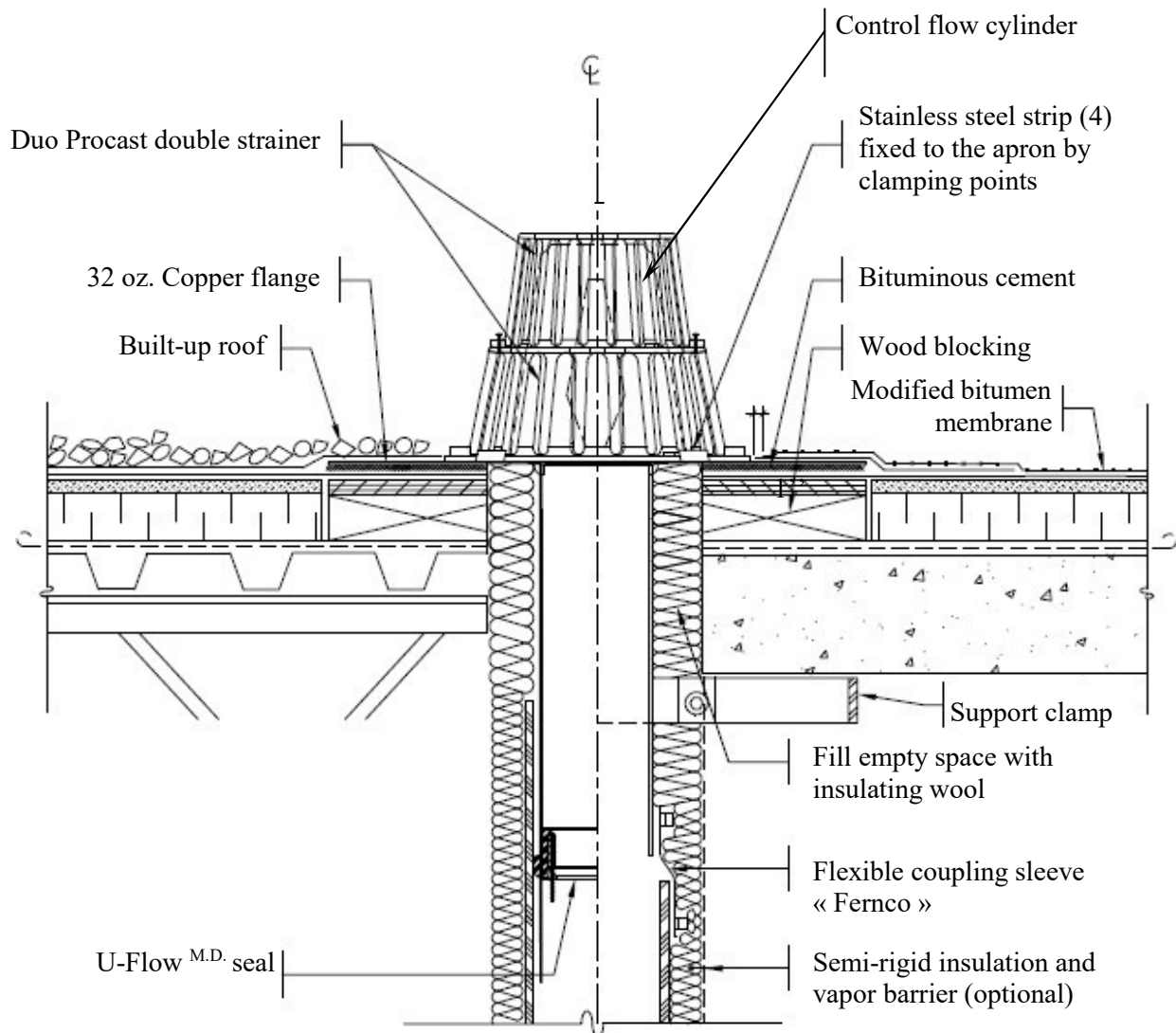
TYPICAL ASSEMBLY



Inverted and conventional roofing system, anti-vandalism

DUO PROCAST DOME STRAINER WITH ULTRA* COPPER DRAIN*

TYPICAL ASSEMBLY



conventional roofing system, anti-vandalism

Les Produits MURPHCO Ltée

TECHNICAL DATA

DESIGNED AND MANUFACTURED BY LES PRODUITS MURPHCO LTÉE

Technical assistance or further information may be obtained from:



Manufacturier et spécialiste de drains de toiture

Boutique de Métal en feuille

4955, rue Brock Montréal, Qc, H4E 1B5

Tél : (514) 937-3275 Fax : (514) 937-6797

Site web : www.produitsmurphco.com Courriel : info@produitsmurphco.com

DOCUMENTATION PREPARED WITH THE TECHNICAL COOPERATION OF:

Englobe

1200, boul. Saint-Martin Ouest, bureau 400

Laval (Québec) H7S 2E4

T 514.281.5173

F 450.668.5532

info@englobecorp.com

NOTICE

The information and specification provided in this document are applicable at time of publication. They are condensed from the exact results obtained through real tests and field experience, but may not be construed as implying any absolute and final dictate on our part. **Les Produits MURPHCO Ltée** Reserves the right to modify, without notice, the information provided in the present document, as a result of its research and development policy on its products.